

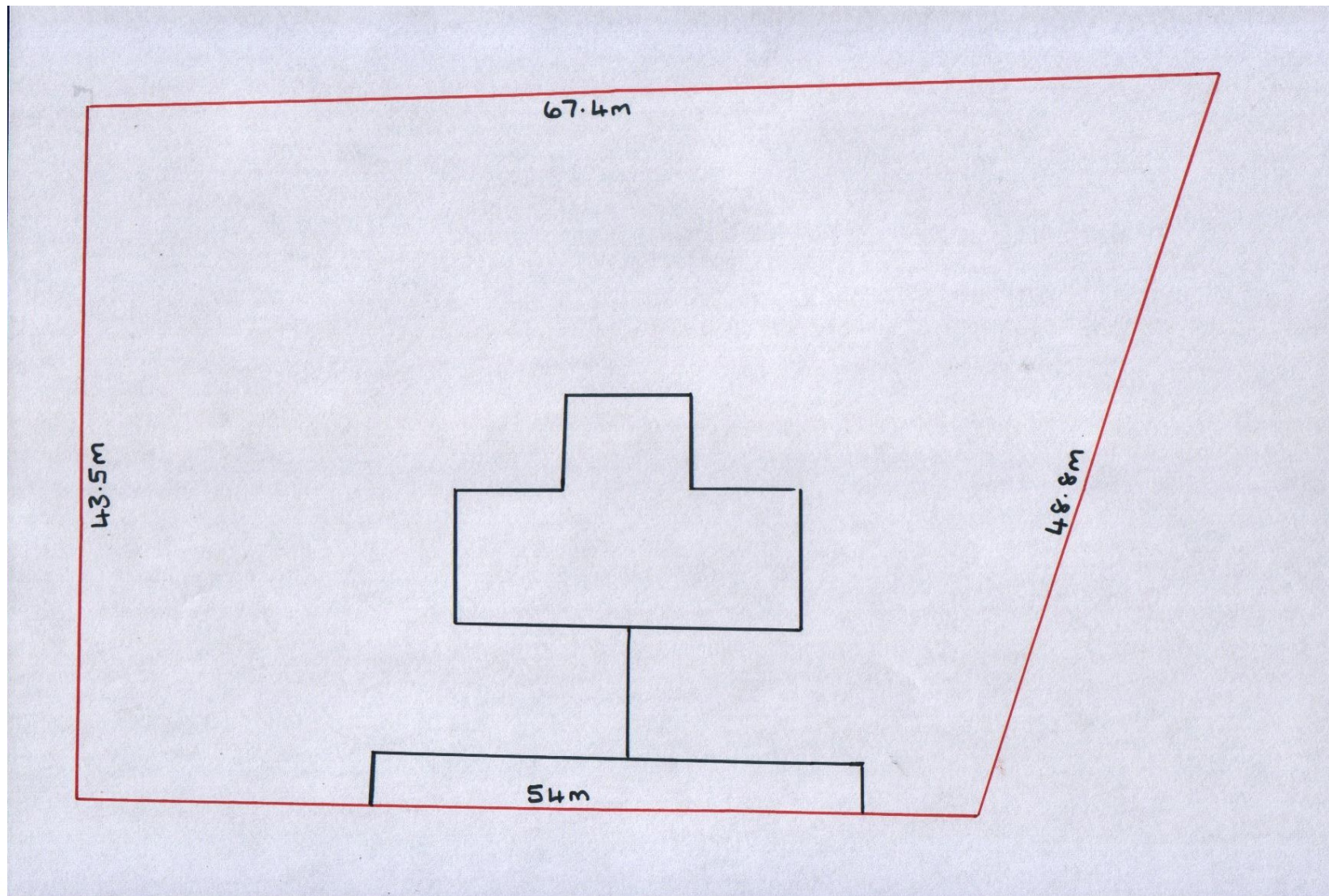


**Plot of Ground to include former School & Stables
Kingarth, Isle of Bute
Price - £195,000**

Hannay Fraser & Co

SITE LAYOUT PLAN

Not to Scale



SOLICITORS

HANNAY FRASER & CO

ESTATE AGENTS



Location & Description

A very rare opportunity to acquire a plot of ground situated at Kingarth, a popular rural location on the south side of the island.

The plot extends to approximately 0.27 hectares and presents a unique opportunity for residential development, subject to obtaining the necessary planning consents. As there is an existing building and stables on the site, planning is not expected to pose a problem.

Alternatively, the former school and stables could be developed to provide a magnificent family home with stables and large private gardens. Currently the school has two exceptionally spacious rooms, a store room and a shower room with WC.

School Building

Workshop	8.597 x 6.860m
Store	8.603 x 6.845m
Store	3.007x 3.099m
Shower Room	3.007 x 3.099m

Stables

9 stable buildings
Hay Shed
Tack Room
Feed Room

Viewing Strictly by Appointment through Hannay Fraser & Co

Whilst we endeavour to make these particulars as accurate as possible, they do not form part of any contract or offer nor are they guaranteed. Measurements are approximate. If there is any part of these particulars that you find misleading or simply wish clarification on any point, please contact our office immediately where we will endeavour to assist you in any way possible.

Telephone Hannay Fraser & Co on 01700 503 112

www.hannayfraser.co.uk

E mail property@hannayfraser.co.uk

EXISTING LAYOUT OF FORMER SCHOOL

